

## PASS THRU REFRIGERATORS

### Series Overview

The pass thru refrigerators feature front and rear access for applications where loading and removal of products from both sides of the unit is required. Ideal for clean room and Pharmacy IV preparation applications. These pass thru refrigerators have a microprocessor temperature controller and display which allows for precise management necessary for critical samples and supplies. Refrigerators have an interior fan driven, forced air circulation system which provides superior temperature uniformity and recovery after door openings.

### PTR47

This refrigerator is a two door glass sliding chamber designed for maximum capacity while still allowing passage through most commercial doorways.

### Performance

Unit comes standard with a temperature range of 1° C to 10° C. Automatic cycle defrost prevents product damaging temperature spikes. Products designed to operate in ambient room temperatures not to exceed 75° F / 50% RH.

### Control System

All series models comes standard with a microprocessor temperature controller providing a readout of actual and set-point values. Digital temperature display and alarm module with battery backup to support temperature monitoring and alarms. This chamber comes with audible and visual alarms, remote monitoring and a resettable 1-point min/max history.

### Warranties

These chambers come with a two year parts and labor warranty, plus an additional three year compressor parts warranty.



The Pass Thru Refrigerator's temperature display and alarm module offer an array of robust security features with a monitoring and alarm system that is 100% independent of a microprocessor temperature controller.



### Construction

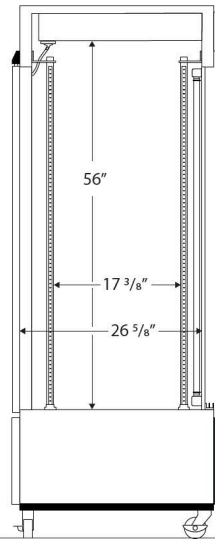
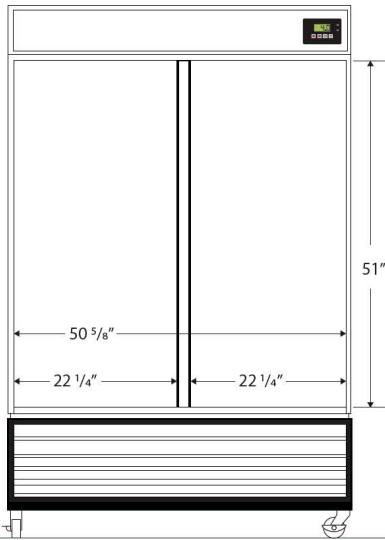
Refrigerator is constructed of white textured cabinet and door

- 8 adjustable shelves
- 3/8" probe access port
- Double sliding glass doors, self-closing (energy efficient, double pane vacuum insulated), right hinged (front)
- Two solid swing doors (back)
- Magnetic door gasket for positive seal with keyed door lock and heavy duty door handle
- Casters add 4" to height
- High density urethane foam cabinet and door insulation
- HFC-free refrigerant (R290a), foam insulation, and packaging
- Exterior dimensions: 54.63" W x 32.63"D x 82.63"H (with casters), 54.63" W x 32.63" D x 78.63" H (without casters)
- Shipping weight: 575 lbs
- Voltage: 115 / 60 / 8.8 Amps, 1/2 HP
- UL/C- UL listed

## Glass Door Pass Thru Laboratory Refrigerator Technical Drawings

Front View

Side View


 115VAC/60Hz/1PH  
NEMA-5-15P

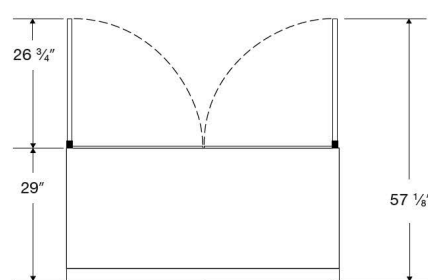
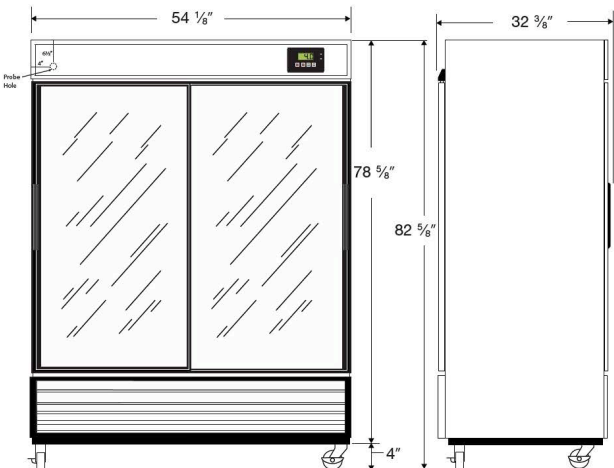
Cu. Ft	Defrost	Doors Front	Doors Back	Shelves	Interior Dim.			Refrigerant	H.P.	Amps	Weight
					W"	D"	H"				
47	Cycle	2 Glass Slide	2 Solid Swing	8 Adj.	50 5/8	26 5/8	56	R290	1/2	8.8	525 lbs.

Note: Interior dimensions are estimates and subject to change without notice

Front View

Side View

Top View


 115VAC/60Hz/1PH  
NEMA-5-15P

Cu. Ft	Defrost	Doors Front	Doors Back	Shelves	Interior Dim.			Refrigerant	H.P.	Amps	Weight
					W"	D"	H"				
47	Cycle	2 Glass Slide	2 Solid Swing	8 Adj.	54 1/8	32 3/8	82 5/8	R290	1/2	8.8	525 lbs.