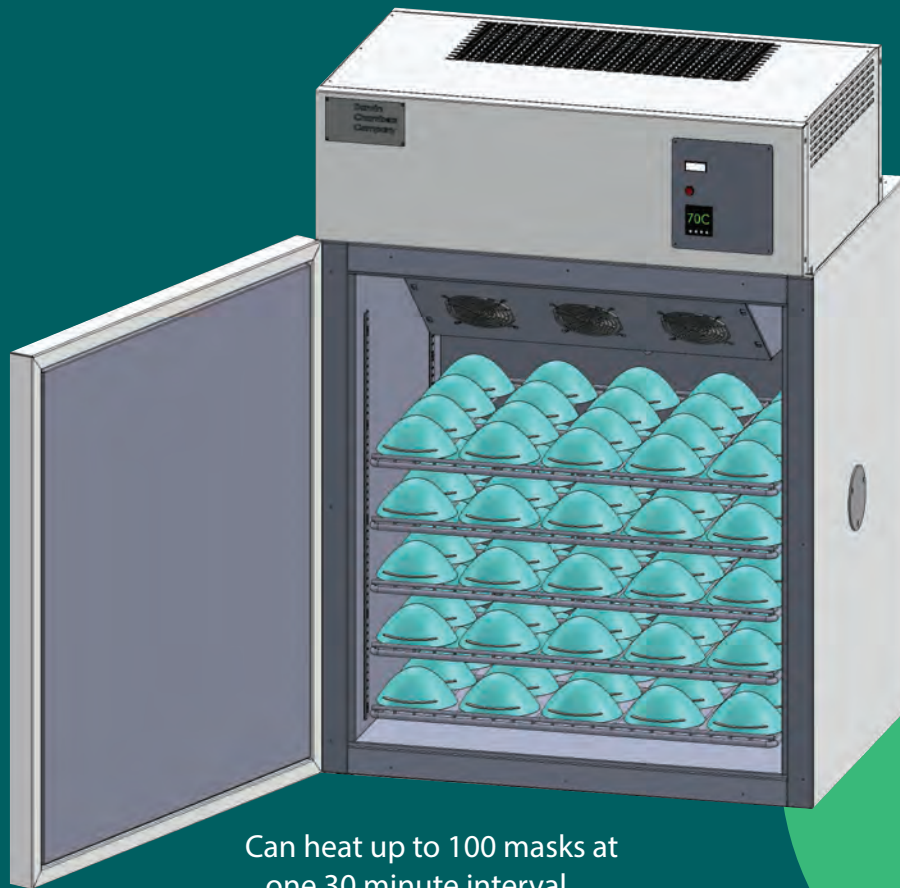


Darwin Chamber's HT09 Low Temp Oven for Decontamination



Can heat up to 100 masks at
one 30 minute interval
Mask dimensions: 5"H x 5.5"W x 2.125"D
4" Shelf Spacing

Available for
Immediate Sale!

\$4,495.00

30 minutes

at

70°C

With face mask shortages due to the Coronavirus, scientists from Stanford have conducted a study confirming that the N95 masks can be decontaminated. Therefore, the masks are suitable for reuse. The HT09 can also be used for tools, airport security items, safety glasses, gloves, and much more.

sales@darwinchambers.com

314-534-3111

HT09 Lab Oven Specifications

Performance	Standard
Temperature Setpoint	70°C, Temperature Range 35°C to 70°C
Ambient Temperature	Ambient 18° C to 27° C
Temperature Control	±.2° C
Control Resolution	±.1° C
Temperature Sensor	NIST Traceable PT 100 RTD Class A

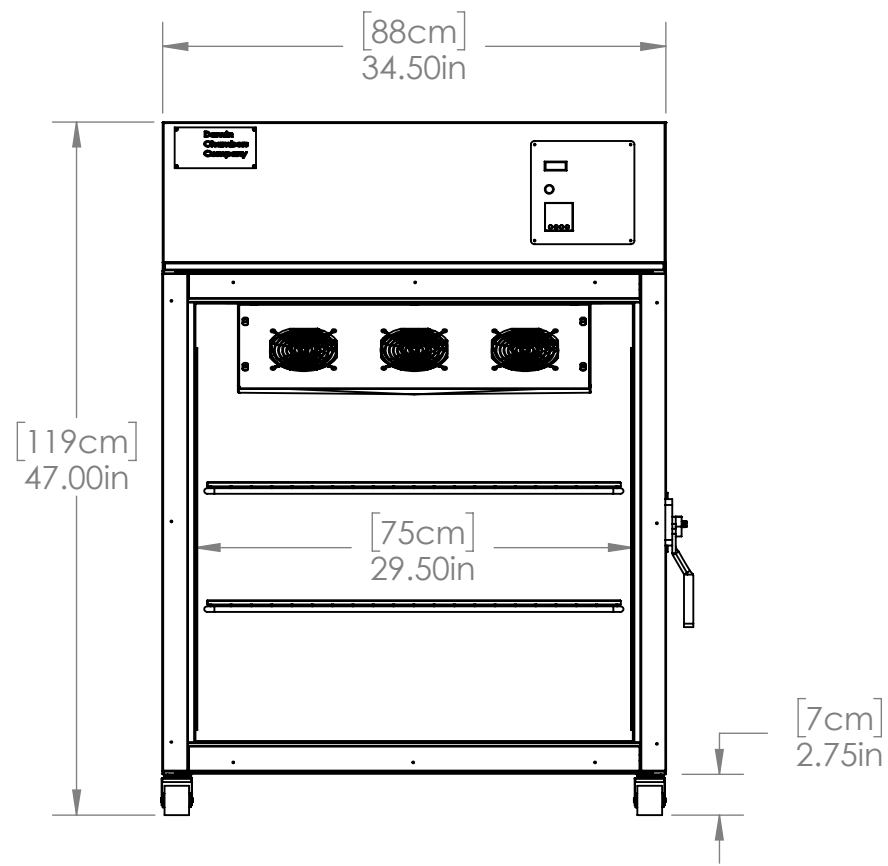
Control System	Standard
Controller	Fuji PXF4 (PID-Fuzzy Logic). Controller has Built-In Adjustable Countdown Timer Alarm in 1 minute Increments
Control Readout	Process Value and Set Point Real Time Display
Calibration Correction Capability	2 Point (Low and High)
Uniformity Off Set	N/A
Alarm	Separate High/ Low Deviation Alarm with Time Delay in Minutes. Disables Impacted Components to Prevent Run Away Temperature
Timer	Adjustable Countdown Timer with Alarm Notification in 1 Minute Increments
Remote Monitoring	Dry Contact and Serial MODBUS RTU (RS485)
Password Protection	Hexidecimal (3 User Levels)
Process Offset	For Mapping Uniformity Correction on Real Time Display

Construction	Standard
Exterior	18-Gauge Galvanized Steel, Powder Coated
Interior	20-Gauge 304 Grade- #4 Finish Stainless Steel
Shelving	5 Stainless Steel Shelves, Adjustable by 1/2" Increments, Supports up to 150 lbs of Evenly Distributed Weight
Legs/ Casters	2.75" H - Qty-4 Caster Wheels, Weight Capacity of 300 lbs Per Caster
Panel Insulation	2" Thick Insulation; Closed Cell Polyisocyanurate (Polyiso) Foam Core and Polyurethane Insulation. Insulation Manufacturer Utilizes CFC Free Blowing Agent That Has Zero ODP.
Doors	0.060 Powder Coated Aluminum with Welded Seams. Door is Installed with 2 Left Hinges. Door is Reversible- Please Specify Swing Direction. *Refer to Drawing for Standard Door Location.
Access Port	Chamber Comes with 2" I.D Access Port, Cover and Insulated Plug. See Drawing for Location.

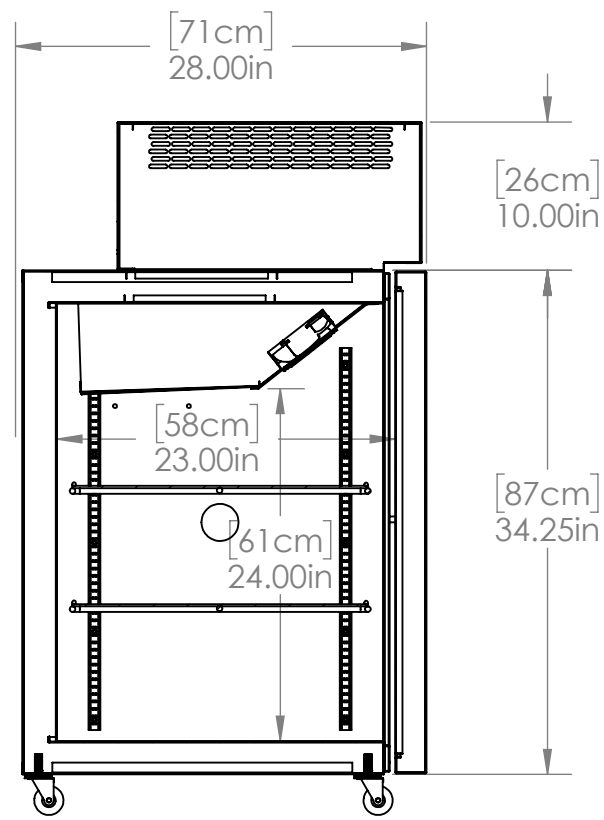
Capacity & Dimensions	US Standard	Metric
Interior Capacity	9.40 ft³	266.18 liters
External Dimensions	34.5" W x 28.00" D x 47" H (with Casters) 34.5" W x 28.00" D x 44.25" H (without Casters)	88cm W x 71cm D x 119cm H (with Casters) 88cm W x 71cm D x 112cm H (without Casters)
Internal Dimensions	29.50" W x 23.00" D x 24.00" H	75cm W x 58cm D x 61cm H
Shelf Dimensions	19.75" W x 28.00" D	50cm W x 71cm D
Crated Weight	470 lbs	213 kg

Electrical	US Standard	International
Voltage (dedicated circuit required)	115v / 60hz / 1ph	230v / 50hz / 1hp
RLA	1.7A	TBD
Cord Length	9 ft Long Cord with NEMA 5-15 Plug	2.74m (Specify Plug)

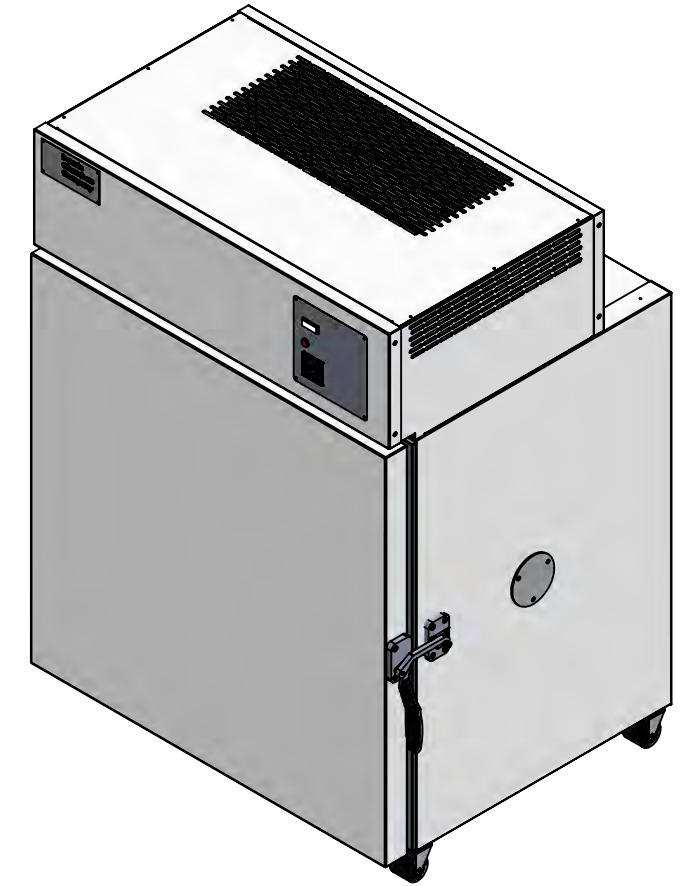




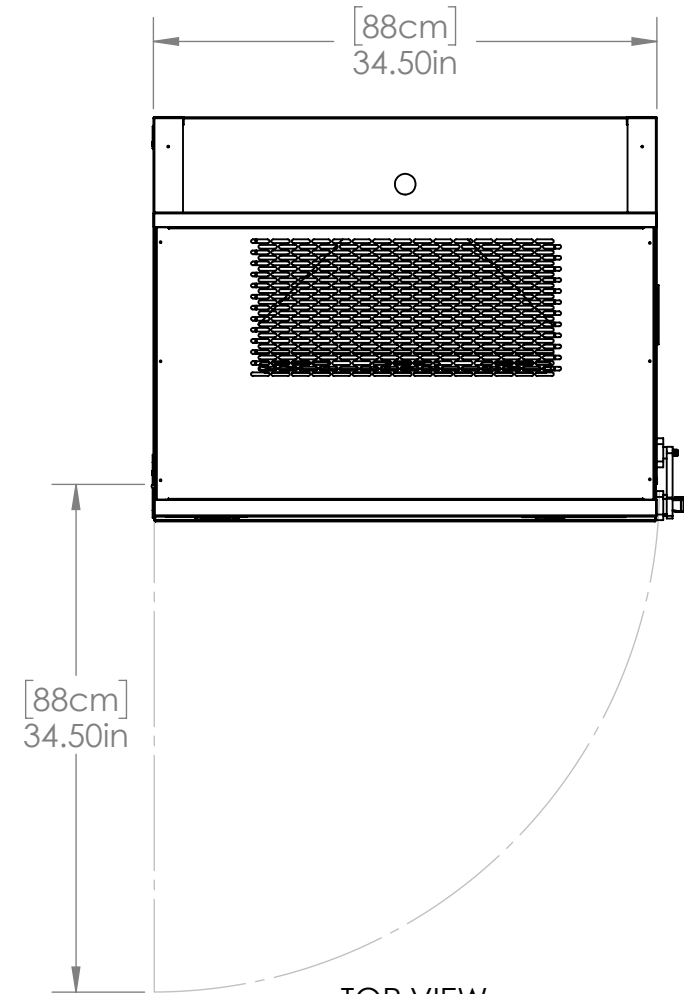
FRONT VIEW
(DOOR REMOVED)



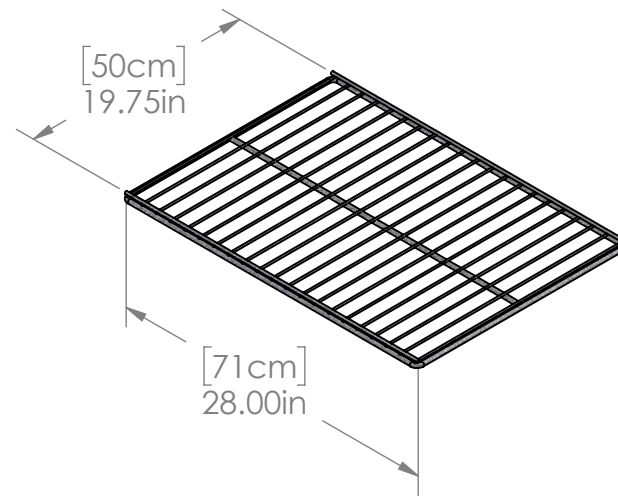
SIDE VIEW
(SECTION)



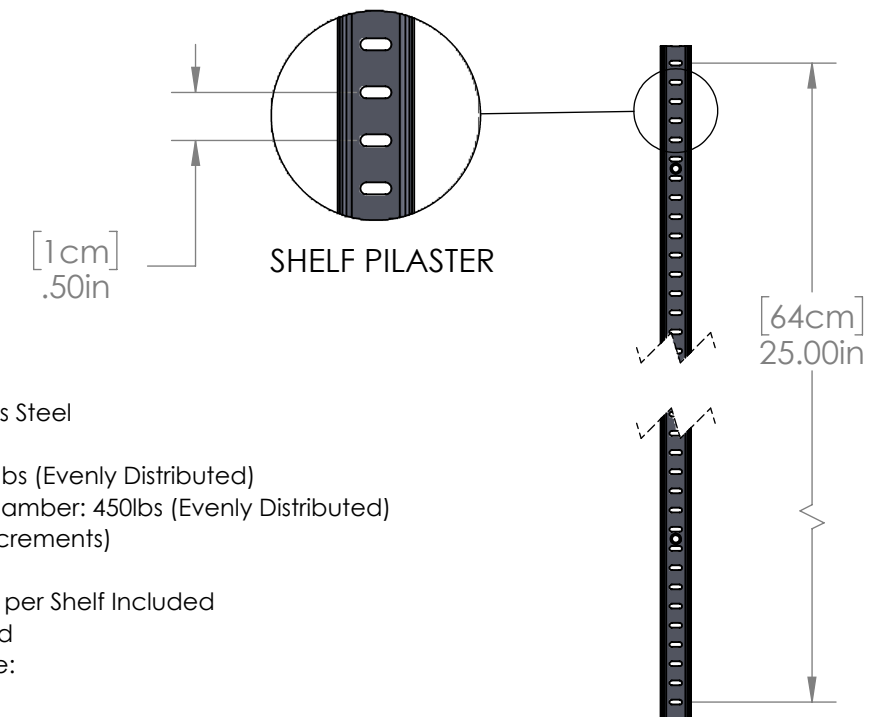
3D VIEW



TOP VIEW



WIRE SHELF



SHELF PILASTER

Notes:

- Shelf Material: 304 Stainless Steel
- Shelf Finish: Polished Steel
- Max Weight per Shelf: 150lbs (Evenly Distributed)
- Max Load Capacity of Chamber: 450lbs (Evenly Distributed)
- Pilaster Height: 25" (1/2" Increments)
- Minimum Spacing: 2"
- 4 Stainless Steel Shelf Clips per Shelf Included
- 2" I.D. Access Port Included
- Dimensions Do Not Include:
 1. 2" W of Door Latch

Note: Tolerances are 0.25" unless otherwise stated
*Dimensions and components are subject to change without notice.