

DUAL TEMPERATURE REFRIGERATOR/ FREEZER COMBO

Series Overview

The dual temperature refrigerator/ freezer combination features separate microprocessor temperature controller which allows for precise temperature control, verification and recovery. An interior fan, forced-draft air circulation system is used and provides temperature uniformity when the door is opened for the refrigerator part. All units require a 4" clearance around the back and sides of the unit for ventilation. *Periodic manual defrosting is required (freezer).

DTRF-7

Two exterior swing doors (glass door refrigerators/ solid door freezer) chamber designed for maximum capacity while still allowing passage through most commercial doorways.

Performance

Unit comes standard with a temperature range for the refrigerator: 1°C to 10°C. Freezer temperature range: -15°C to -25°C. Manual defrost (freezer) and cycle defrost (refrigerator). Products designed to operate in ambient room temperatures not to exceed 75° F / 50% RH.

Control System

All series models come standard with a digital microprocessor temperature controller providing a readout of actual and set-point values. This chamber comes with audible/visual alarms, high and low temperature alarms with remote alarm contacts.

Warranties

These chambers come with a two year parts and labor warranty, plus an additional three year compressor parts warranty.



The Dual Temperature Refrigerator/ Freezer Combos take a large step forward in performance from past general purpose units; offering a digital temperature display and alarm module coupled with a microprocessor temperature controller.

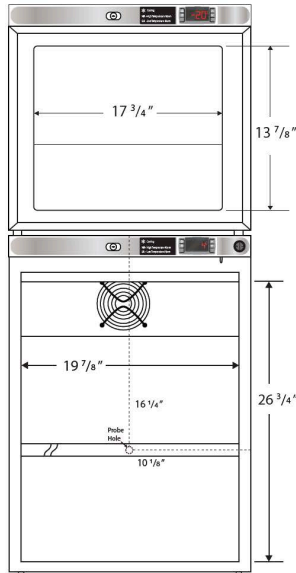
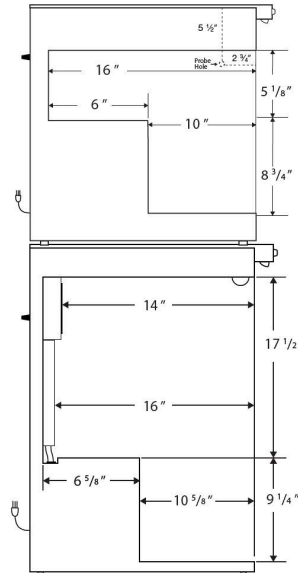


Construction

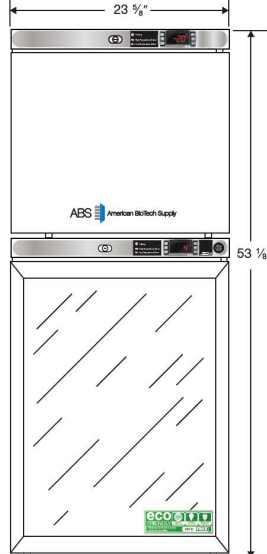
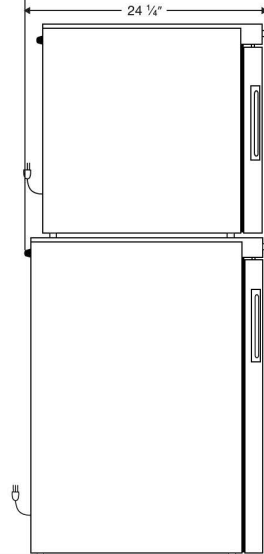
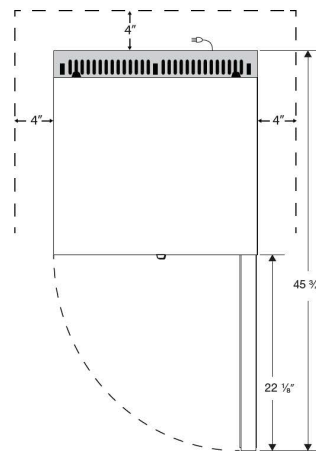
Refrigerator/ freezer combo is constructed of white powder coated exterior.

- 3 adjustable shelves refrigerator/ 2 adjustable shelves freezer with back rails to prevent product from being pushed against back wall
- two exterior swing doors (glass door refrigerators/ solid door freezer), right hinged, not reversible
- Magnetic door gasket for positive seal with keyed door lock and integrated door handle
- Leveling legs
- Footed bottom shelf refrigerator and freezer
- Stacking kit
- Probe access port (3/8"), one in refrigerator and one in freezer
- LED interior lights
- HFC-free refrigerant (R600a), foam insulation and packaging
- Exterior dimensions: 23.63" W x 24.25"D x 53.13"H
- Shipping weight: 207 lbs
- Voltage: 115 / 60 / 1.3 Amps refrigerator, 1 Amps freezer, 1/6 HP refrigerator, 1/8 HP freezer
- UL/C-UL listed

Dual Temperature Refrigerator/ Freezer Combos Technical Drawings

Front View

Side View

 115VAC/60Hz/1PH
NEMA-5-15P

Compartment	Cu. Ft	Defrost	Door	Int Door	Shelves	Interior Dim.			Refrigerant	H.P.	Amps	Weight
						W"	D"	H"				
Freezer	1.7	Manual Cycle	1 Solid	0	2 Adj.	17 3/4	16	13 7/8	R600a	1/8	1	135 lbs.
Refrigerator	5.2	Manual Cycle	1 Glass	0	3 Adj.	19 7/8	16	26 3/4		1/6	1.3	

Note: Interior dimensions are estimates and subject to change without notice
Front View

Side View

Top View

 115VAC/60Hz/1PH
NEMA-5-15P

NOTE: Ventilation Requirements – Minimum 4" clearance on sides and back

Compartment	Cu. Ft	Defrost	Door	Int Door	Shelves	Interior Dim.			Refrigerant	H.P.	Amps	Weight
						W"	D"	H"				
Freezer	1.7	Manual Cycle	1 Solid	0	2 Adj.	23 5/8	24 1/4	53 1/8	R600a	1/8	1	135 lbs.
Refrigerator	5.2	Manual Cycle	1 Glass	0	3 Adj.					1/6	1.3	